

Priorslee Academy Parking Charter

Due to the limited parking space outside of the school, coupled with increased traffic on Priorslee Avenue, the Directors of the Priorslee Multi Academy Trust would like to raise awareness to support the safety of pupils when they are arriving at and leaving the school premises. Although we are aware that many parents drive carefully outside the school, there has been communication from parents, the community and residents regarding parking before and after school.

Where at all possible, please consider:

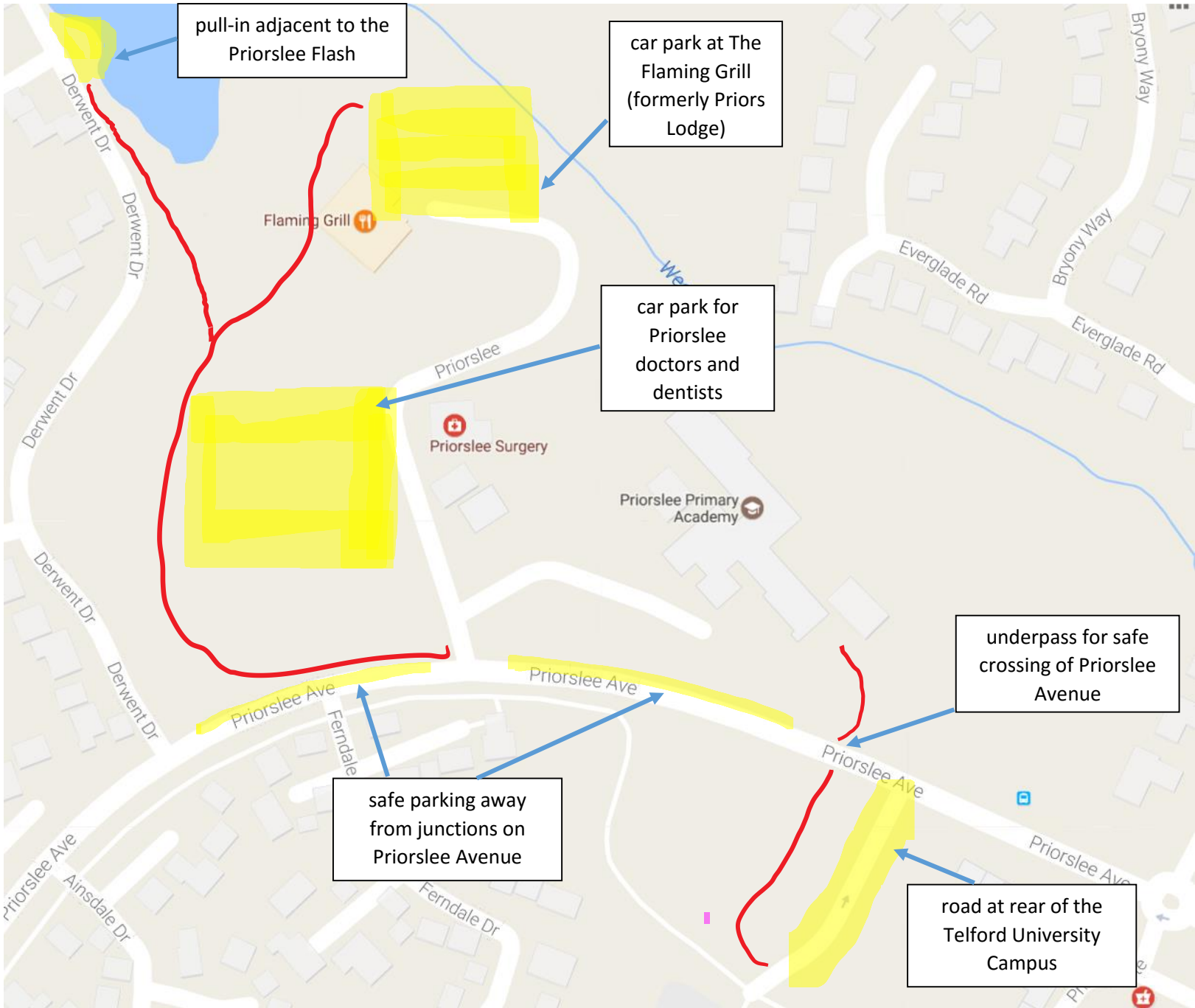
- Car sharing
- Walking your child to and from school
- Encouraging your child to cycle (please see the cycling and walking maps on the school website under 'road safety and getting to school')

Remember that children's safety is everyone's responsibility. We also suggest that if parents observe illegal or dangerous parking, they should report it at once to the police. If you have any further suggestions on how to improve parking, then please let us know.

Please read the advice below and familiarise yourselves with the map showing recommended places to park/drop-off/pick-up to ease congestion. Please share with anyone else who might drive to and from school:

1. When dropping off children, please make sure that they get out on the pavement side of the vehicle, not on the road-side
2. If parking on the road, please ensure that you are not opposite or within 10m of a junction (Rule 243 of the Highway Code)
3. Where possible, drop-off older children to walk into school independently
4. Cross the road with children using the two underpasses on Priorslee Avenue, rather than crossing the main road
5. Do not park on double yellow lines or zig-zag lines denoting a 'school zone'
6. Drive safely around the school area at less than 20mph
7. Do not park across residents' driveways - and to move your car if requested to do so by a local resident to enable them to access their property or to allow emergency vehicles to access a property
8. Do not park or turn around on grass verges
9. Leave in plenty of time for the school run and try to leave asap after drop-off/pick-up to allow space for other cars to park
10. Park with courtesy and consideration to others, always allows pedestrians to be able to walk on pavements and leaving space for prams/pushchairs to get past
11. **Park at one of the advised parking zones (Doctors car park, Priorslee Flaming Grill, pull-in on Derwent Drive by the Priorslee Flash and University rear access road) and walk with children into school using pathways - see map below**

On the map below on the adjoining page, the yellow highlighted areas show alternative places for parents to park, red lines show safe footpaths to the school site.



pull-in adjacent to the Priorslee Flash

car park at The Flaming Grill (formerly Priors Lodge)

car park for Priorslee doctors and dentists

underpass for safe crossing of Priorslee Avenue

safe parking away from junctions on Priorslee Avenue

road at rear of the Telford University Campus